

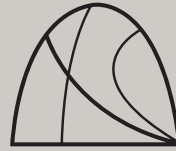


TUNNELS BEACHES  
*est. 1823*

## Tunnels Beaches Wedding Venue Extension

Completion | March 2026





TUNNELS BEACHES

*est. 1823*



Accommodation

**2-68**

Weddings

**40-150**  
(up to 200 in eve.)

Elopements

**2-18**

Unique | Exclusivity | Bespoke Venue | Historic Tunnels | Private Beaches | Tidal Pool | Sunsets  
High Quality (On-Site) Self Catering Accommodation | Scenic | North Devon | UK

[www.tunnelsbeaches.co.uk](http://www.tunnelsbeaches.co.uk)





## Extension of existing wedding venue & terrace.

Venue capacity will increase from a maximum of 120 day/160 evening guests to 150 day/200 evening guests.

The terrace is extending forward by 8 metres, projecting over the sea during some high tides!

Outdoor ceremonies will be seaward facing (as with indoor ceremony set ups). New under cover area for live daytime music.









Extension of ground floor bar & creation of extra outdoor under cover area.

The ground floor bar will be repositioned & improved to offer a larger mingling space for guests.

The extended 1st floor above will provide a large under cover area outside the ground floor bar.  
Indoor/outdoor flow will be maximised to create a relaxed & sociable environment, whatever the weather.









## Function room views...

Uninterrupted sea views for food.

Incredible ceremony plan B!







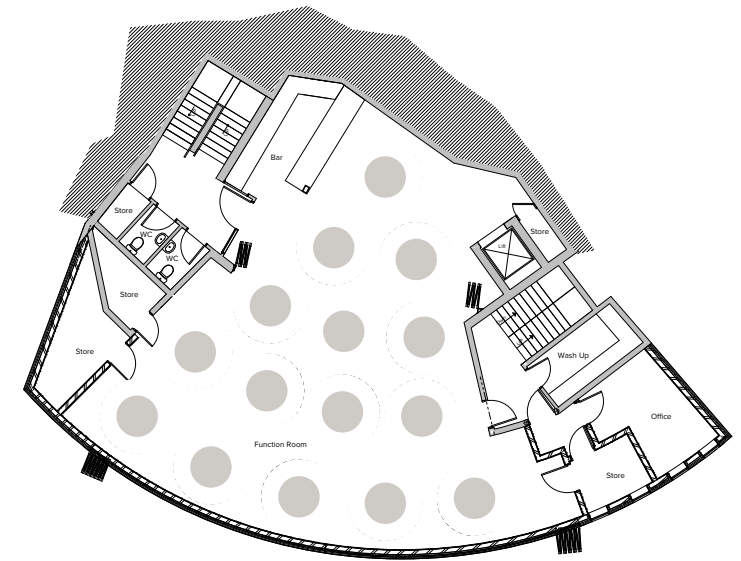
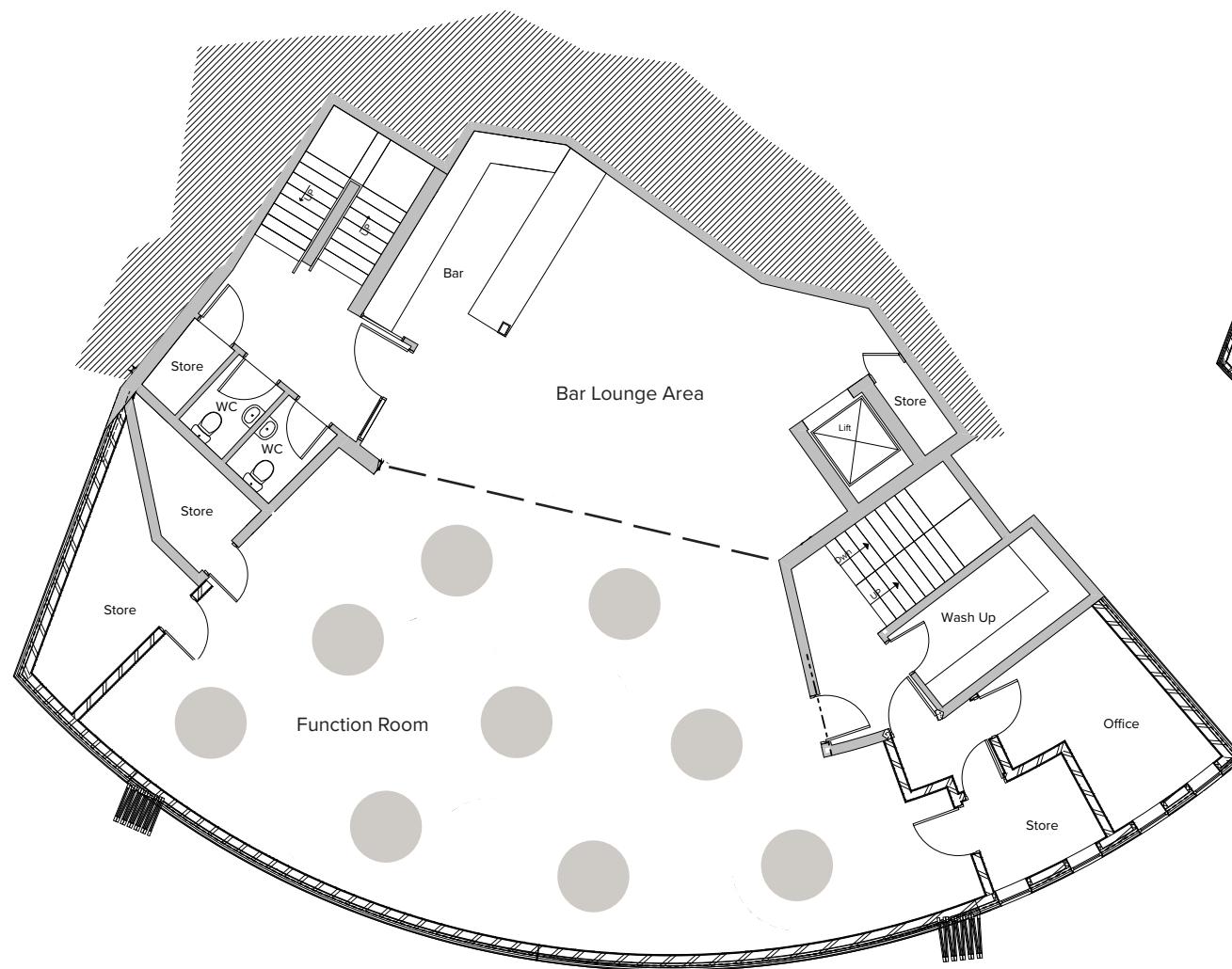


## Creation of bespoke elopement venue (same incredible sea views!)

Offering a more intimate scale of venue for our elopements of up to 18 people. Fully accessible via our extended lift. Ceremony room, private dining room & comfy lounge area - all opening onto our decked roof terrace.

\*Full size weddings will have access to the roof terrace. The lounge area will also be available.





## Ist Floor Plan

Showing layout examples  
for 9 & 15 tables.

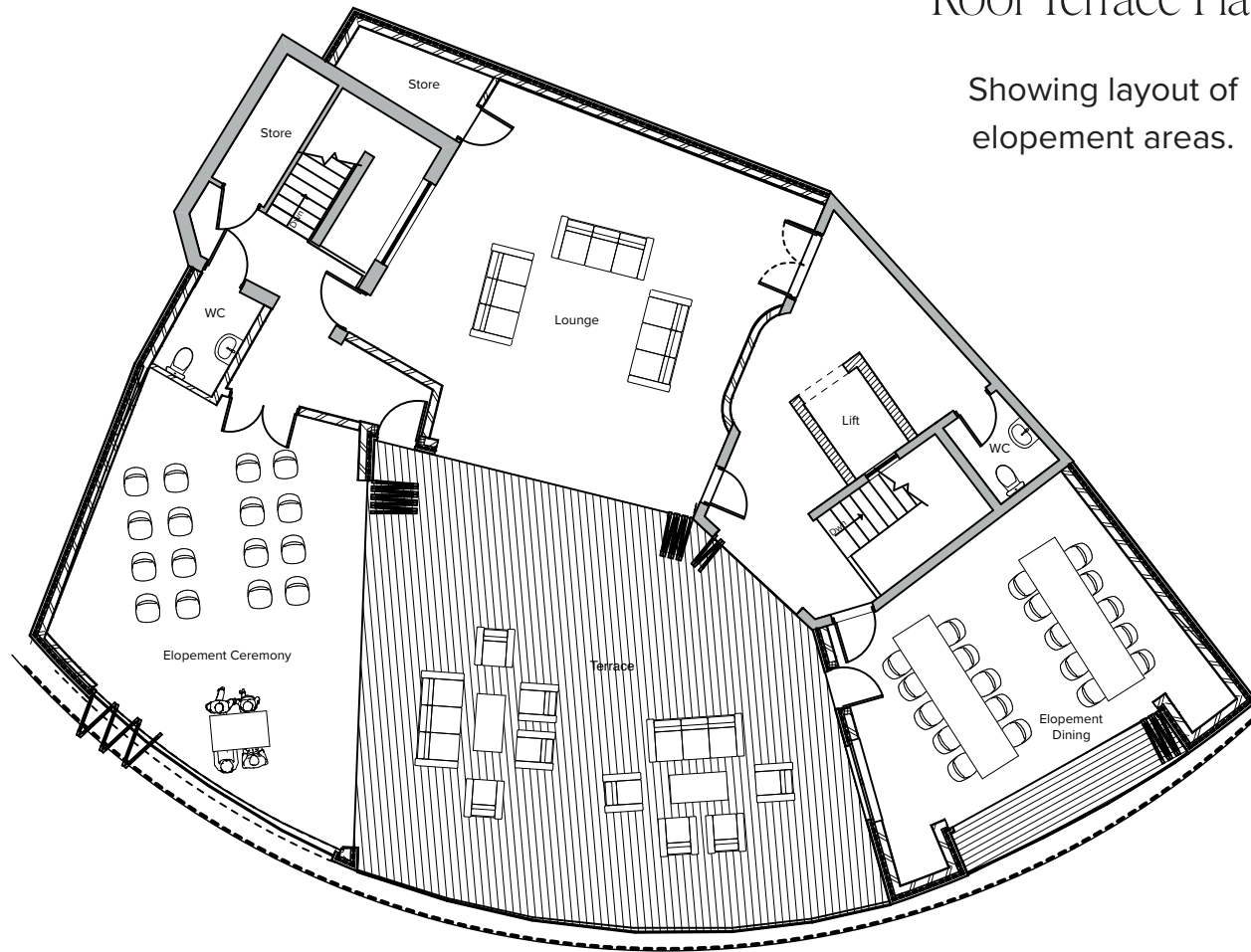
Extension of 1st floor function room to provide additional, flexible space.

Venue capacity will increase to a maximum of 150 day guests & 200 evening guests. Minimum numbers remain at 40.  
Bifold reeded glass doors will separate the bar & function room allowing more intimate areas for smaller wedding groups.  
For larger weddings (120+), the bifold doors can be opened to utilise the entire 1st floor space.



## Roof Terrace Plan

Showing layout of  
elopement areas.



## View from above...

Seeded roof to help the venue  
blend into the natural habitat.



Development of roof terrace to provide a new elopement venue.

Ceremony room with incredible sea views, permanently set up for elopements of 2-18 people.  
Private dining room with 2 large tables & seating for up to 18 people (if food booked). Comfy lounge with sofas.  
Bifold glass doors from all areas onto spacious roof terrace with sofas & uninterrupted sea views.





TUNNELS BEACHES

*est. 1823*

‘SEA Suite’ coming soon in 2027!

[www.tunnelsbeaches.co.uk](http://www.tunnelsbeaches.co.uk)